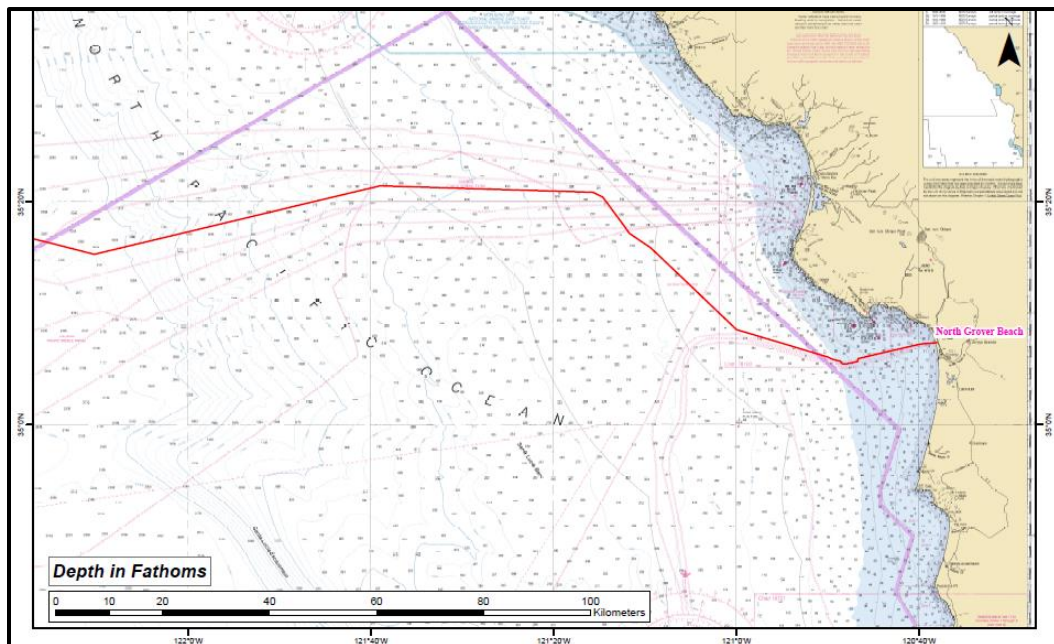


ATTENTION CENTRAL CALIFORNIA COAST FISHERMEN

Temporary Fishing Gear Clearance Requested in Advance of Planned Subsea Communications Cable Installation Commencing off Grover Beach, November 5th 2020

Installation operations for the planned BtoBE trans-Pacific submarine fiber-optic communications cable will take place in state and federal waters off California beginning approximately November 5th 2020 through approximately December 1st. During operations, fishermen are requested to avoid setting pot, trap and longline gear within 0.5 nautical miles either side of the installation swath, to prevent entanglement with or gear damage from cable route clearance, installation and cable burial operations (please see the following cable route position list for line coordinates). The cable is planned to be buried about 6' beneath the sea bed wherever feasible. This fiber optic cable will update and improve US West Coast internet, telephone communications and other data infrastructure capacity. Route planning, survey and a cable/fishing agreement were approved by all regulatory authorities and in cooperation with the Central California Joint Cable/Fisheries Liaison Committee.

The approximate cable route of requested fixed gear removal is shown as the red line below:



Fishing Gear Clearance Required in Cable Installation Area Nov 5 – Approx. Dec 1 2020

Fishermen with any set lines or traps along the below coordinates are requested to clear it no later than **5th November 2020** and avoid setting on this line until completion of operations.

The cable will be installed by the C/S Rene Descartes:



C/S René Descartes Call Sign: FNWZ
VHF Channels monitored: 16 & 12
Emergency contact persons on vessel:
 Mr. Christophe Pape from Nov 4th forward;
EIC Tel: +33 968 900 018
Vessel Bridge Tel: +33 968 900 023
Vessel Master: Hervé Desmeulles; Tel +33 968 900 017

Approx. initial installation vessel position during cable landing N 35° 07.28', W 120° 39.14', about 12 fathoms water depth. The installation route will follow the below coordinates from Grover Beach, CA, westward:

Latitude			Longitude			Depth (m)	Depth (fath)
N	35 °	07.2929 '	W	120 °	39.0247 '	16	9
N	35 °	07.2504 '	W	120 °	39.8163 '	21	11
N	35 °	06.5717 '	W	120 °	43.3584 '	37	20
N	35 °	05.9423 '	W	120 °	46.6453 '	63	34
N	35 °	05.8179 '	W	120 °	46.6872 '	65	36
N	35 °	05.6727 '	W	120 °	46.7360 '	66	36
N	35 °	05.4592 '	W	120 °	47.8721 '	79	43
N	35 °	05.4610 '	W	120 °	48.4108 '	84	46
N	35 °	05.6024 '	W	120 °	48.5414 '	85	46
N	35 °	05.7202 '	W	120 °	48.6501 '	86	47
N	35 °	05.7734 '	W	120 °	48.9991 '	89	49
N	35 °	05.8978 '	W	120 °	49.5519 '	95	52
N	35 °	06.0582 '	W	120 °	49.9138 '	98	54
N	35 °	07.4373 '	W	120 °	55.5091 '	195	107
N	35 °	07.7003 '	W	120 °	56.1437 '	209	114
N	35 °	07.7684 '	W	120 °	56.4898 '	219	120
N	35 °	07.7628 '	W	120 °	56.8379 '	231	126
N	35 °	07.7571 '	W	120 °	57.1921 '	244	133
N	35 °	07.8250 '	W	120 °	57.5332 '	255	139
N	35 °	09.6320 '	W	121 °	01.3622 '	378	207
N	35 °	11.5802 '	W	121 °	03.8575 '	429	235
N	35 °	12.8290 '	W	121 °	05.4574 '	453	248
N	35 °	15.2221 '	W	121 °	08.5247 '	474	259
N	35 °	16.3828 '	W	121 °	10.2854 '	485	265
N	35 °	16.8881 '	W	121 °	11.1900 '	492	269
N	35 °	17.4427 '	W	121 °	11.9283 '	495	271
N	35 °	17.6524 '	W	121 °	12.1172 '	495	271
N	35 °	17.6592 '	W	121 °	12.1233 '	495	271
N	35 °	18.0867 '	W	121 °	12.5085 '	495	271
N	35 °	18.4609 '	W	121 °	12.9753 '	496	271
N	35 °	18.7384 '	W	121 °	13.1791 '	495	271
N	35 °	19.5340 '	W	121 °	13.7633 '	491	268
N	35 °	19.6331 '	W	121 °	13.8360 '	490	268
N	35 °	20.6361 '	W	121 °	15.0845 '	493	270
N	35 °	20.8350 '	W	121 °	15.6681 '	501	274
N	35 °	20.9334 '	W	121 °	16.4489 '	515	282
N	35 °	20.9809 '	W	121 °	17.9100 '	547	299
N	35 °	20.9500 '	W	121 °	23.0276 '	714	390
N	35 °	21.1139 '	W	121 °	27.1095 '	862	471
N	35 °	21.0986 '	W	121 °	29.1920 '	912	499
N	35 °	21.3711 '	W	121 °	36.6065 '	1013	554
N	35 °	21.3706 '	W	121 °	36.6159 '	1013	554
N	35 °	21.2648 '	W	121 °	38.7224 '	1052	575
N	35 °	20.9126 '	W	121 °	40.4379 '	1108	606
N	35 °	19.8038 '	W	121 °	44.2790 '	1282	701
N	35 °	18.8271 '	W	121 °	47.0695 '	1427	780
N	35 °	18.6613 '	W	121 °	47.9893 '	1500	820

For more information please contact Wolfgang Rain at Sea Risk Solutions LLC.
 Tel: +1 206 427 6553
wrain@searisksolutions.com